

# room lighting & temperature control

## lighting

Switch on individual lights by touching the numbered icons. Stroke inside the circular rim to raise or lower lighting levels.

To switch on all lights simultaneously, touch central icon once (Fig 1)

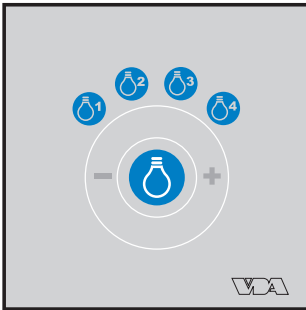
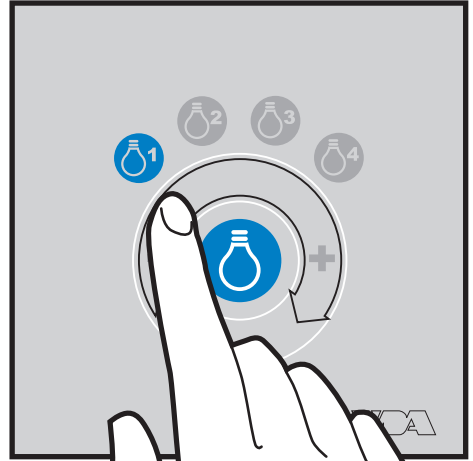
To switch all lights off, touch central icon again (Fig 2)

## temperature

Stroke inside circular rim to raise or lower temperature.

Touch ECO button for economy setting (Fig 4)

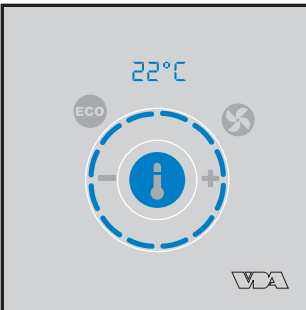
Touch FAN icon to boost temperature setting (Fig 5)



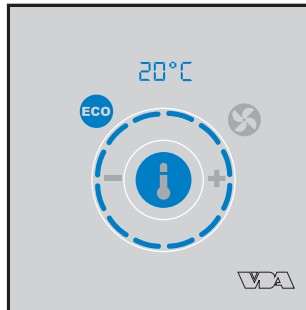
1. All lights on



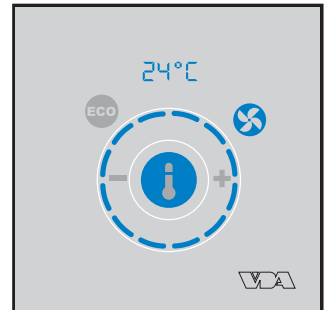
2. All lights off



3. Manual setting



4. ECO enabled



5. Fan boost enabled